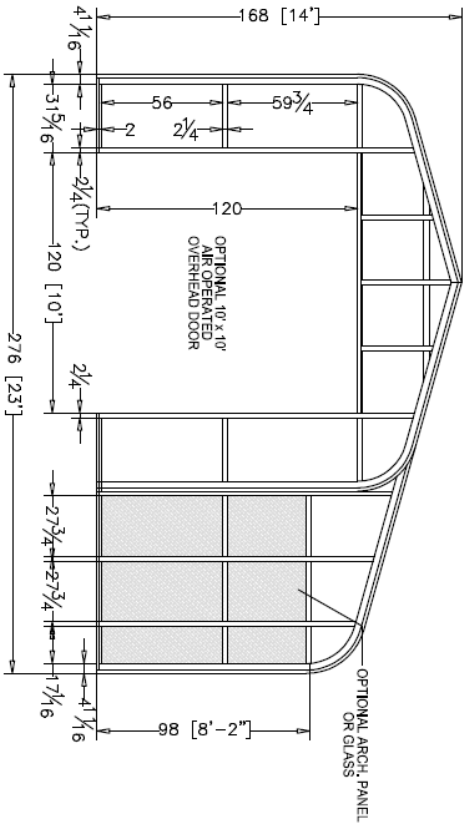
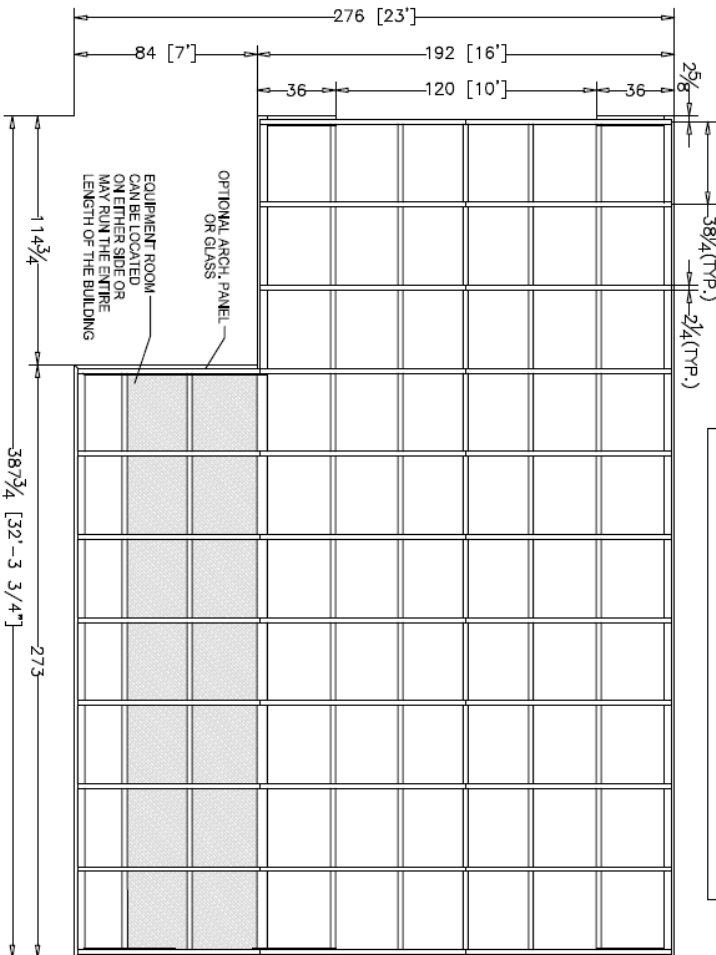


**A FRONT ELEVATION**  
SCALE: N/A = 1'-0"



**B REAR ELEVATION**  
SCALE: N/A = 1'-0"

STD. # OF BAYS	STANDARD LENGTHS	NOTES	
10	32'-3 3/4"	<ul style="list-style-type: none"> <li>● ALL GLASS IS FULLY TEMPERED (SINGLE OR INSULATED STANDARD). LAMINATED ROOF GLASS IS OPTIONAL.</li> <li>● FRAME FINISH IS POLYCRON. OPTIONAL FINISHES INCLUDE POWDERCOAT, KYNAR, OR ANODIZED.</li> <li>● SIZES MAY VARY TO CONFORM TO SPECIFIC EQUIPMENT REQUIREMENTS.</li> <li>● OPTIONAL ARCHITECTURAL PANELS IN EQUIPMENT ROOM COME WITH TEXTURED ALUMINUM SURFACE FINISHED TO MATCH FRAMING COLOR.</li> <li>● WALK-THROUGH DOORS ARE STAINLESS STEEL WITH STAINLESS STEEL KNOB AND DEARBOLT. PAINTED STEEL DOORS TO MATCH FRAME ARE OPTIONAL.</li> <li>● WITH A MAXIMUM WIND LOAD OF 20 PSF, CONDITION B. THIS UNIT WILL SUPPORT A LIVE LOAD OF 61'. IF YOUR LOCAL CODE REQUIREMENTS REQUIRE HEAVIER LOADS, WE WILL ADD ADDITIONAL STRUCTURE AS NECESSARY TO MEET YOUR CODES. PRICES WILL BE ADJUSTED ACCORDINGLY.</li> <li>● CARWASH EQUIPMENT TO BE FLOOR MOUNTED. IF REQUIRED WE CAN DESIGN STRUCTURAL BRACKETS AND ATTACHMENTS TO SUPPORT EQUIPMENT. PRICES WILL BE ADJUSTED ACCORDINGLY.</li> <li>● SEE SPECIFICATIONS FOR ADDITIONAL INFORMATION.</li> </ul>	
11	35'-6"		
12	38'-8 1/4"		
13	41'-10 1/2"		
14	45'-0 3/4"		
15	48'-3"		
16	51'-5 1/4"		
17	54'-7 1/2"		
18	57'-9 3/4"		
19	61'		
20	64'-2 1/4"		
ADD OR SUBTRACT SINGLE BAYS +/- 3'-2 1/4"			<p>● THESE DRAWINGS ARE INTENDED FOR VISUAL AND PICTORIAL AIDS. DO NOT USE THESE DIMENSIONS TO PREPARE SURROUNDING FOUNDATION OR OTHER RELATED CONSTRUCTION WORK.</p>



**C ROOF PLAN VIEW**  
SCALE: N/A = 1'-0"

