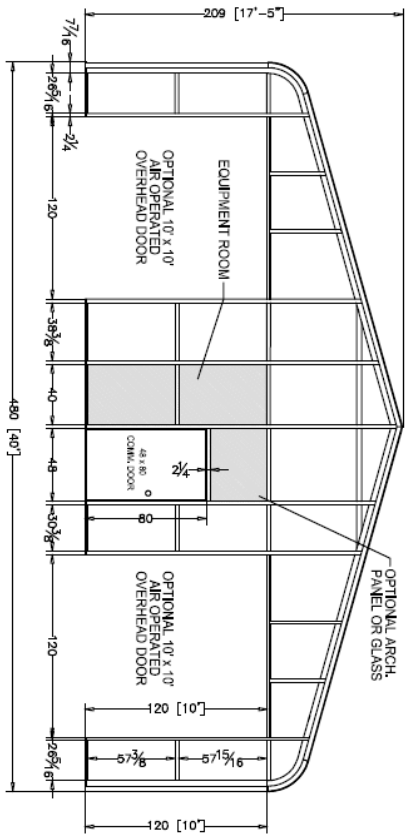


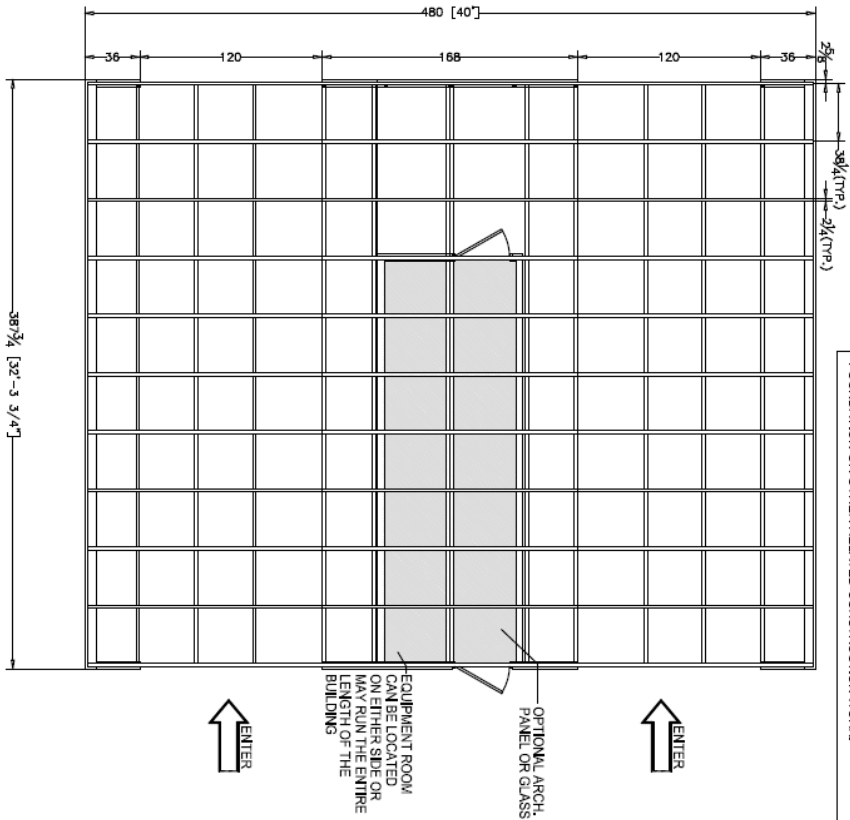
A REAR ELEVATION
SCALE: N/A = 1'-0"



B FRONT ELEVATION
SCALE: N/A = 1'-0"

STD. # OF BAYS	STANDARD LENGTHS
10	32-3 3/4"
11	35-6"
12	38-8 1/4"
13	41-10 1/2"
14	45-0 3/4"
15	48-3"
16	51-5 1/4"
17	54-7 1/2"
18	57-9 3/4"
19	61'
20	64-2 1/4"

ADD OR SUBTRACT
SINGLE BAYS
+/- 3'-2 1/4"



C ROOF PLAN VIEW
SCALE: N/A = 1'-0"

NOTES

- ALL GLASS IS FULLY TEMPERED, SINGLE OR INSULATED (STANDARD). LAMINATED ROOF GLASS IS OPTIONAL.
- FRAME FINISH IS POLYCON. OPTIONAL FINISHES INCLUDE POWDERCOAT, KYNAR, OR ANODIZED.
- SIZES MAY VARY TO CONFORM TO SPECIFIC EQUIPMENT REQUIREMENTS.
- OPTIONAL ARCHITECTURAL PANELS IN EQUIPMENT ROOM COME WITH TEXTURED ALUMINUM SURFACE FINISHED TO MATCH FRAMING COLOR.
- WALK-THROUGH DOORS ARE STAINLESS STEEL WITH STAINLESS STEEL KNOB AND DEADBOLT. PAINTED STEEL DOORS TO MATCH FRAME ARE OPTIONAL.
- WITH A MAXIMUM WIND LOAD OF 20 PSF. CONDITION B. THIS UNIT WILL SUPPORT A LIVE LOAD OF 15 PSF.
- IF YOUR LOCAL CODE REQUIREMENTS REQUIRE HEAVIER LOADS, WE WILL ADD ADDITIONAL STRUCTURES AS NECESSARY TO MEET YOUR CODES. PRICES WILL BE ADJUSTED ACCORDINGLY.
- CARWASH EQUIPMENT TO BE FLOOR MOUNTED. IF REQUIRED WE CAN DESIGN STRUCTURAL BRACKETS AND ATTACHMENTS TO SUPPORT EQUIPMENT. PRICES WILL BE ADJUSTED ACCORDINGLY.
- SEE SPECIFICATIONS FOR ADDITIONAL INFORMATION.

THESE DRAWINGS ARE INTENDED FOR VISUAL AND PICTORIAL AIDS. DO NOT USE THESE DIMENSIONS TO PREPARE SURROUNDING FOUNDATION OR OTHER RELATED CONSTRUCTION WORK.